

Order Code:

RG D 05

Description:

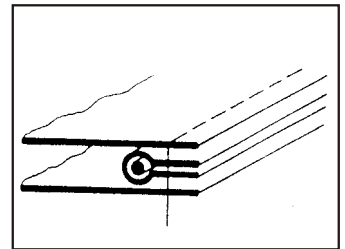
PIPING FOLDER FOR FLAT BED MACHINE WITH OR WITHOUT CORD INSERT

Available in:

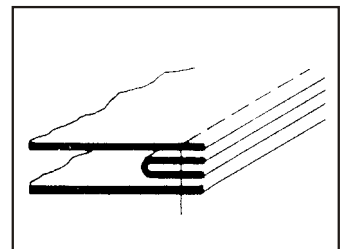
EXTRA LIGHT, LIGHT, MEDIUM, MEDIUM HEAVY



Foot can be supplied with cord insert on request.



With cord insert



Without cord insert

Recommended Sizes

Start Size mm	Finish Size mm	Start Size inches	Finish Size inches
10	5	3/8	3/16
15	8	1/2	1/4
20	10	5/8	5/16
25	13	3/4	3/8
30	15	1	1/2
35	18	1 1/4	5/8
40	20	1 1/2	3/4
45	23	1 3/4	7/8
50	25	2	1
55	28	2 1/4	1 1/8
60	30	2 1/2	1 1/4
65	33	2 3/4	1 3/8
70	35	3	1 1/2
75	38	3 1/4	1 5/8

Comments

- RG D05 is for flat bed machines and can be manufactured with cord insert or without cord insert.
- Please state cord diameter if you require cord insert.
- RG D05 is fixed to RG N14 bracket as standard.
- **CHECK ANY SEAMS IN TAPE/FABRIC TO PASS THROUGH FOLDER**
- STATE MACHINE TYPE AND MODEL NUMBER